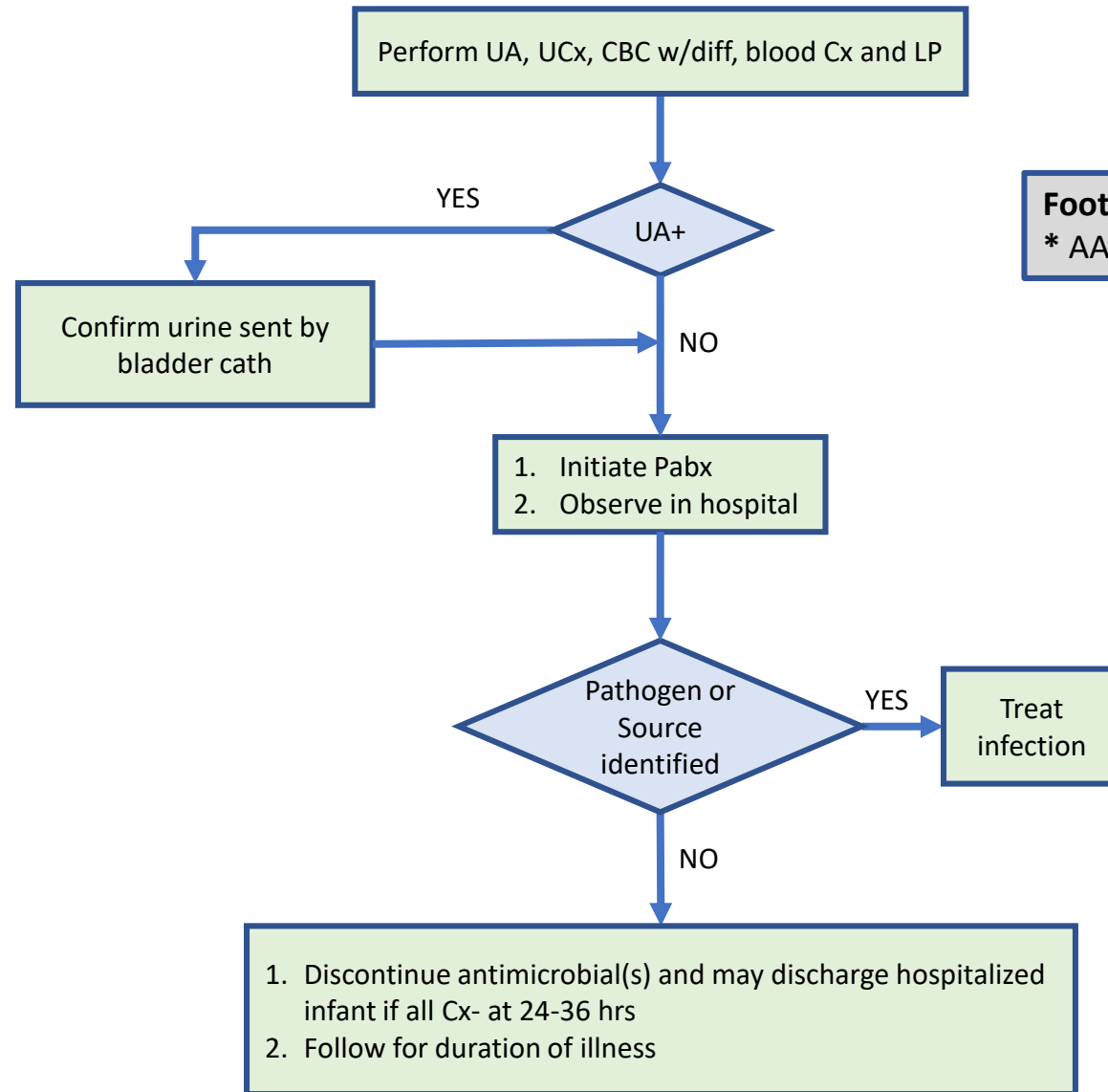


Algorithm for High-Risk Febrile Infant: 29-60 days of age, temp  $\geq 38\text{C}^*$ **Footnotes:**

\* AAP does not include high-risk infants

## Algorithm for High-Risk Febrile Infant: 29-60 days of age, temp $\geq$ 38C

### Exclusion criteria

1. Infants with clinical bronchiolitis, with or without positive tests for RSV
2. Infants with COVID-19
3. Infants who have received immunizations within the last 48 hrs



**Consult Pediatrics**

### Inclusion criteria

- Infants 29-60 days of age, temp  $\geq$  38C AND one of the following:
1. Premature infants < 37 wks gestational age
  2. Infants with documented or suspected immune compromise
  3. Infants whose neonatal course was complicated by surgery or infection
  4. Infants with congenital or chromosomal abnormalities
  5. Medically fragile infants requiring some form of technology or ongoing therapeutic intervention to sustain life
  6. Ill appearance

### Footnotes

\* AAP does not include high-risk infants

### Abbreviations

1. Cath: catheter
2. CBC w/diff: complete blood count with differential
3. CSF: cerebrospinal fluid
4. Cx: culture
5. HSV: herpes simplex virus
6. LP: lumbar puncture
7. RSV: respiratory syncytial virus
8. UA: urinalysis
9. UCx: urine culture
10. Pabx: parenteral antibiotics