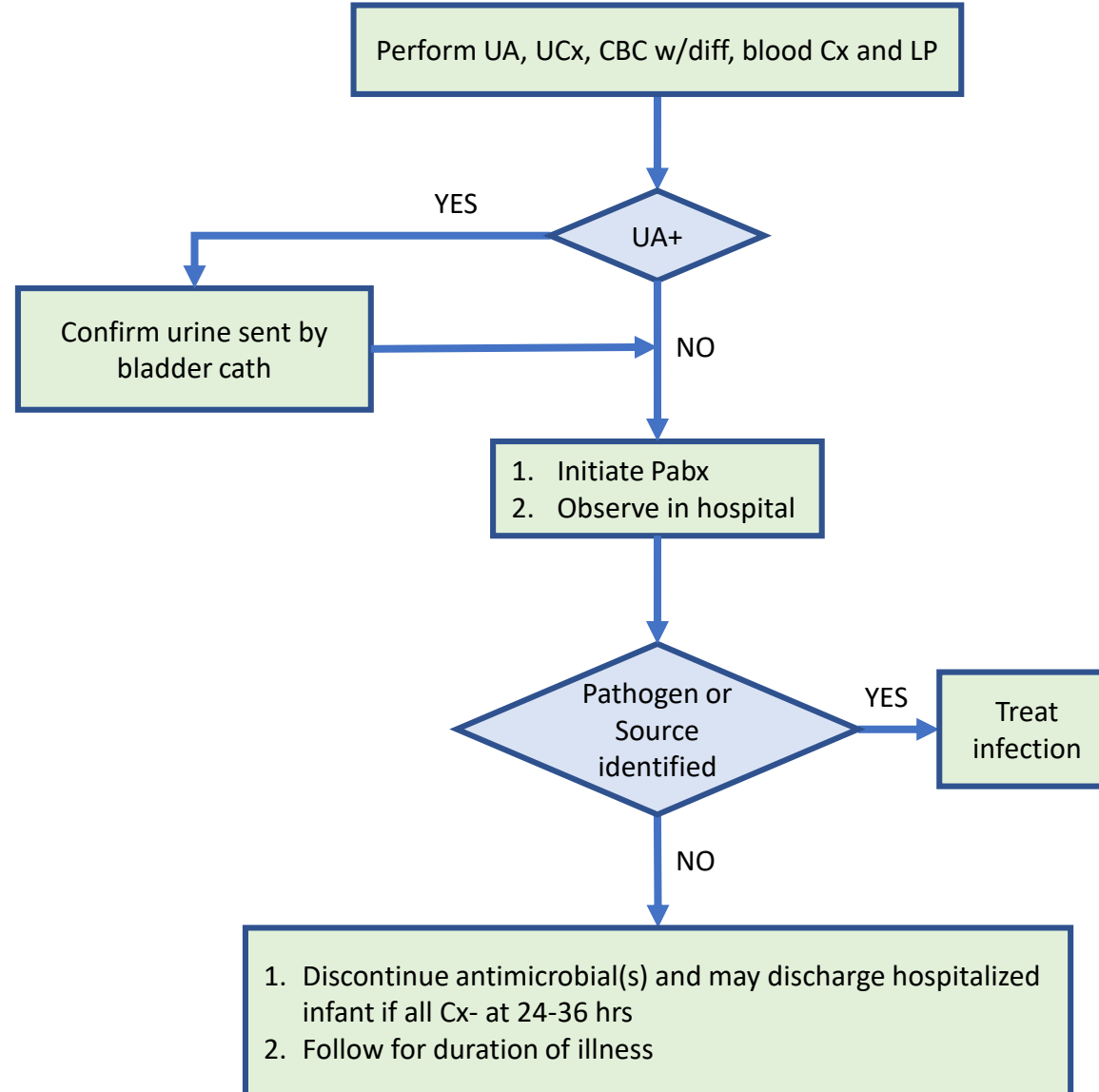


Algorithm for Ill-Appearing Febrile Infant: 61-90 days of age, temp $\geq 38\text{C}^*$ **Footnote:**

* AAP does not include infants age > 60 days or ill-appearing

Algorithm for Ill-Appearing Febrile Infant: 61-90 days of age, temp $\geq 38\text{C}^*$

CA FIRST Protocol v2.2

Supplemental Information

Exclusion criteria

1. Infants with clinical bronchiolitis, with or without positive tests for RSV
2. Infants with COVID-19



Consult Pediatrics

Inclusion criteria

Infants 61-90 days of age*, ill-appearing, temp $\geq 38\text{C}$

Abbreviations

1. Cath: catheter
2. CBC: complete blood count
3. LP: lumbar puncture
4. RSV: respiratory syncytial virus
5. UA: urinalysis
6. UCx: urine culture
7. UTI: urinary tract infection
8. Pabx: parenteral antibiotics

Footnote

* AAP does not include infants age > 60 days or ill-appearing